



# Central Government Employees Welfare Housing Organisation

## CGEWHO HOUSING PROJECT KOLKATA PH-III, AT JOKA



### Monthly Progress Report Status as on 31/07/2024

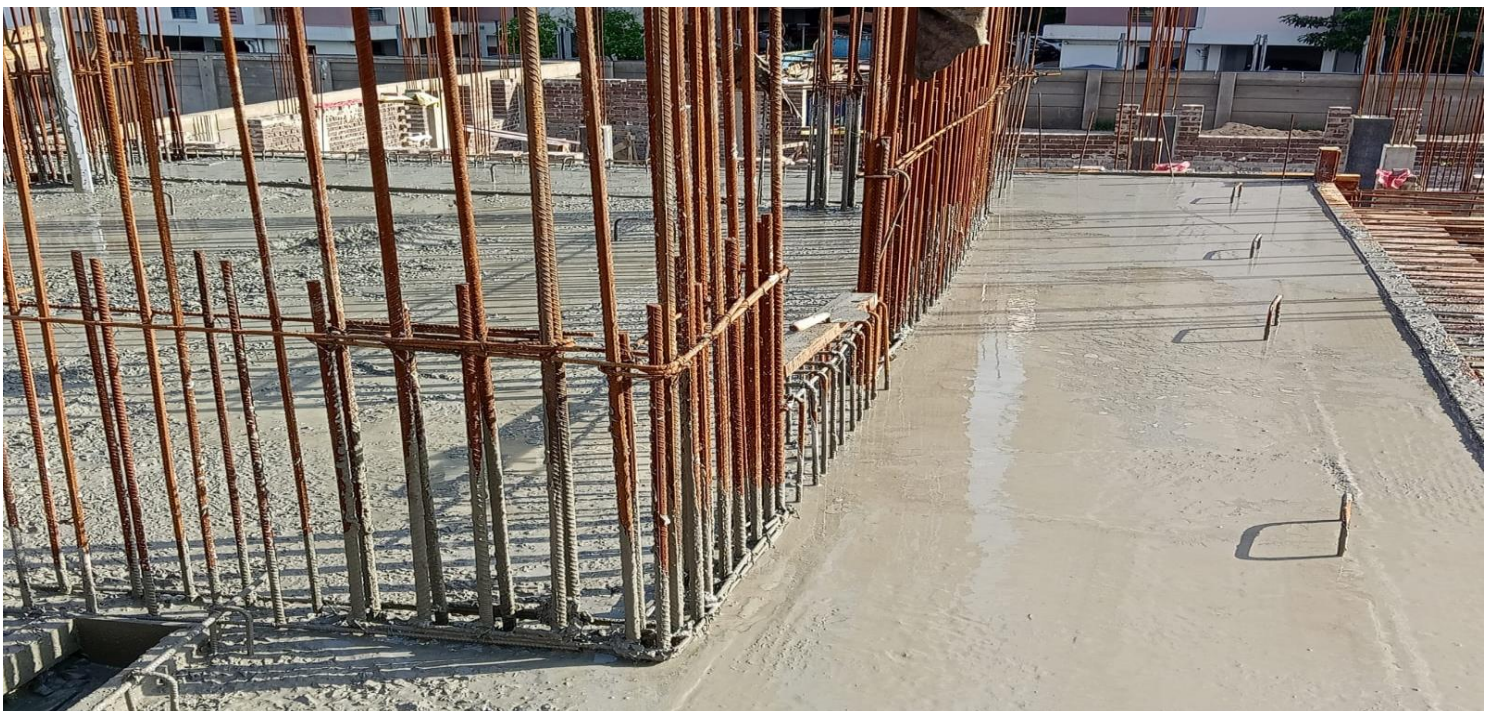
DESCRIPTION	PROGRESS UPTO 31 <sup>ST</sup> JULY-2024
BOUNDARY WALL	◆ 95% Completed except gate.
BORE WELL	◆ 02 nos bore well completed.
BLOCK-1 TYPE-C	◆ PCC for Pile Cap 100% completed. ◆ RCC for pile cap work 100% completed. ◆ Anti termite treatment (stage-01)-90% completed. ◆ Anti termite treatment (stage-02)-25% completed ◆ Reinforcement placing and shuttering work for column and shear wall is in progress at stilt floor.
BLOCK-2 TYPE-PARKING	◆ 100% Lay out and grid line fixing completed.
BLOCK-3 TYPE-N	◆ PCC for Pile Cap 100% completed. ◆ RCC for Pile Cap 90% Completed. ◆ Anti termite treatment (stage-1)-75% completed. ◆ Anti termite treatment (stage-2)-75% completed. ◆ Column & shear wall at stilt floor level 80% completed. ◆ Stilt floor roof slab (part-01) casting is completed. ◆ Stilt floor roof slab shuttering (part-02) work is in progress. ◆ First floor (Part-01) Mivan shuttering and reinforcement placing work is in progress.







## **SLAB CASTING WORK FOR STILT FLOOR ROOF SLAB(PART-01) IN BLOCK-3/N-TYPE FLATS.**







# Central Government Employees Welfare Housing Organisation

**CURING WORK IS IN PROGRESS.**







# Central Government Employees Welfare Housing Organisation

## **MIVAN SHUTTERING WORK AT FIRST FLOOR (PART-01) IN BLOCK-3/N-TYPE FLATS.**







# Central Government Employees Welfare Housing Organisation

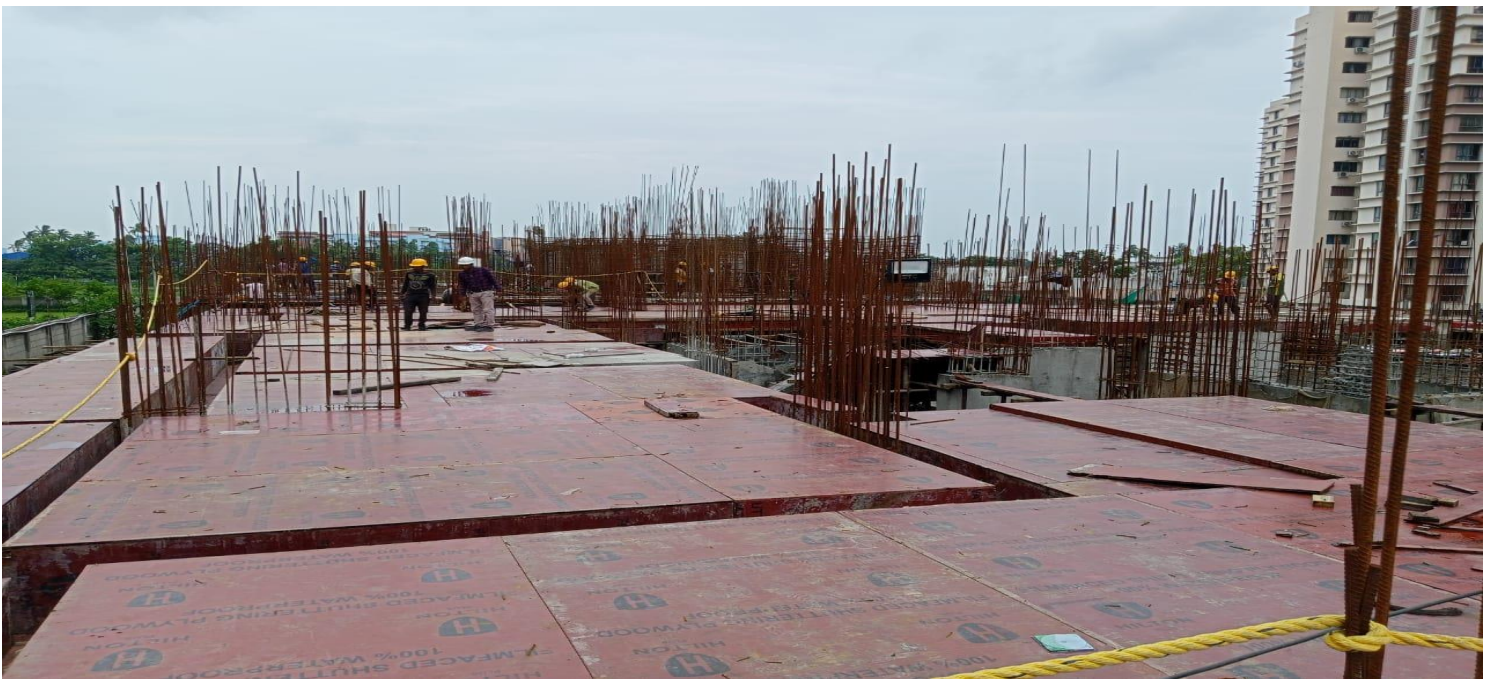
**SHUTTREING AND REINFORCEMENT PLACING WORK IS IN PROGRESS  
AT FIRST FLOOR SALB (PART-1) IN BLOCK-3/N-TYPE FLATS.**







## **SUTTERING WORK FOR STILT FLOOR ROOF SLAB(PART-2)** **AT BLOCK-3/N-TYPE FLATS.**







# Central Government Employees Welfare Housing Organisation

## ***REINFORCEMENT & SHUTTERING PLACING FOR COLUMN AND SHEAR WALL OF BLOCK-1/C-TYPE FLATS.***







# Central Government Employees Welfare Housing Organisation

## **BACK FILLING WORK IS IN PROGRESS FOR BLOCK-1/ C-TYPE FLATS.**

