



CGEWHO HOUSING PROJECT KOLKATA PH-III, AT JOKA



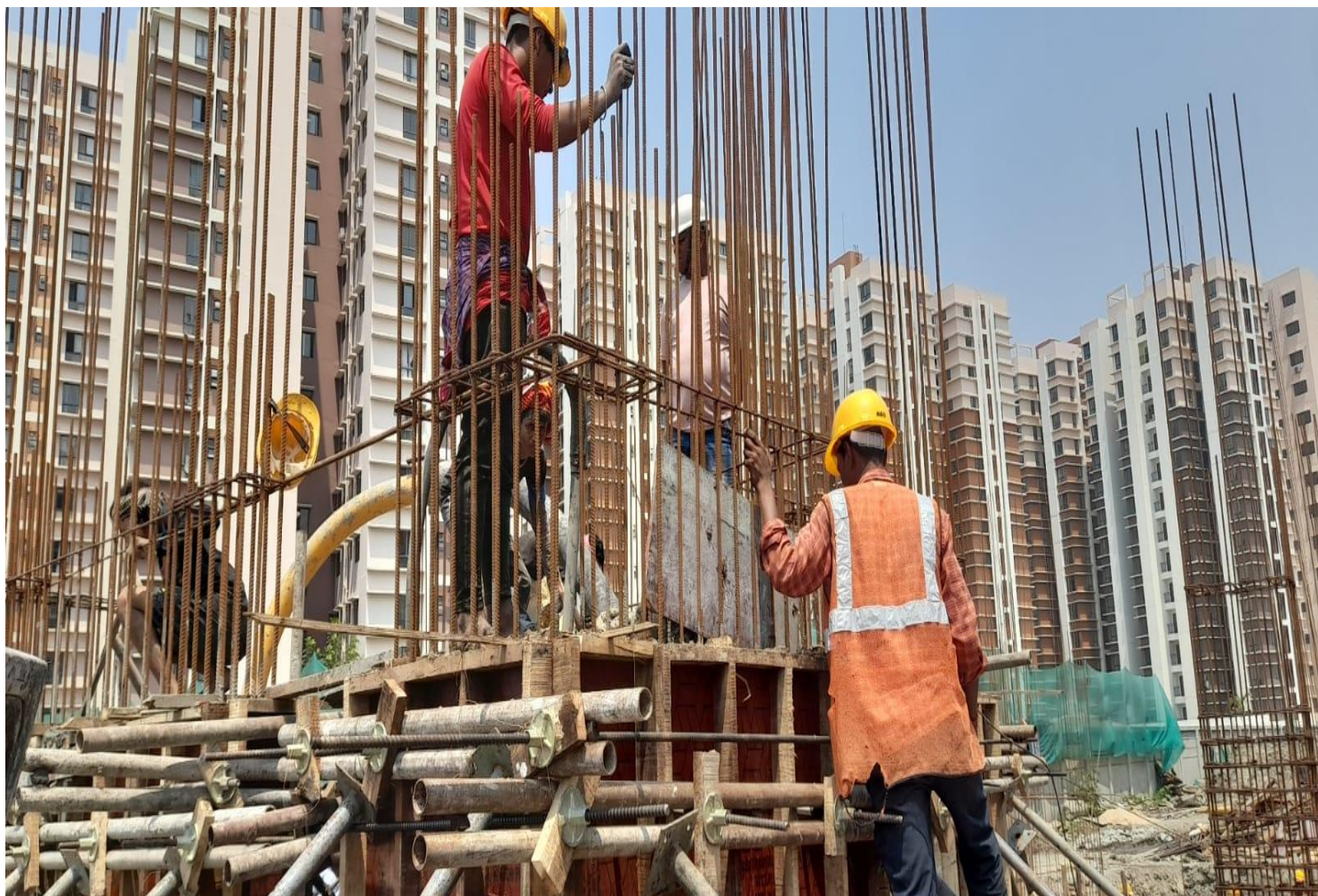
Monthly Progress Report Status as on 30/04/2024

DESCRIPTION	PROGRESS UPTO 30 TH APRIL-2024
BOUNDARY WALL	◆ 95% Completed except gate.
BORE WELL	◆ 02 nos bore well completed.
BLOCK-1 TYPE-C	◆ 100% Lay out and grid line fixing completed. ◆ 100% Pile completed. ◆ Excavation work for Pile Cap 75% completed. ◆ PCC for Pile Cap 60% completed. ◆ Reinforcement placing for pile cap 20% completed.
BLOCK-2 TYPE-PARKING	◆ 100% Lay out and grid line fixing completed.
BLOCK-3 TYPE-N	◆ 100% Lay out and grid line fixing completed. ◆ 100% Pile completed. ◆ Excavation of earth for Pile Cap 90% completed. ◆ PCC for Pile Cap 70% completed. ◆ RCC for Pile Cap 70% Completed. ◆ Anti termite treatment (stage-1)-50% completed. ◆ Column & shear wall at stilt floor level 20% completed.





CONCRETING WORK FOR BLOCK-3/ N-TYPE FLATS.





ANTI TERMITE TREATMENT (STAGE-01) FOR BLOCK-3/N- TYPE FLATS.





BACK FILLING WORK FOR BLOCK-3/ N-TYPE FLATS.





COLUMN & SHEAR WALL AT STILT FLOOR LEVEL OF BLOCK-3/ N-TYPE FLATS.





SUCCESSFULLY COMPLETED ROUTINE LOAD TESTS FOR BLOCK-1/C-TYPE FLATS.





Central Government Employees Welfare Housing Organisation

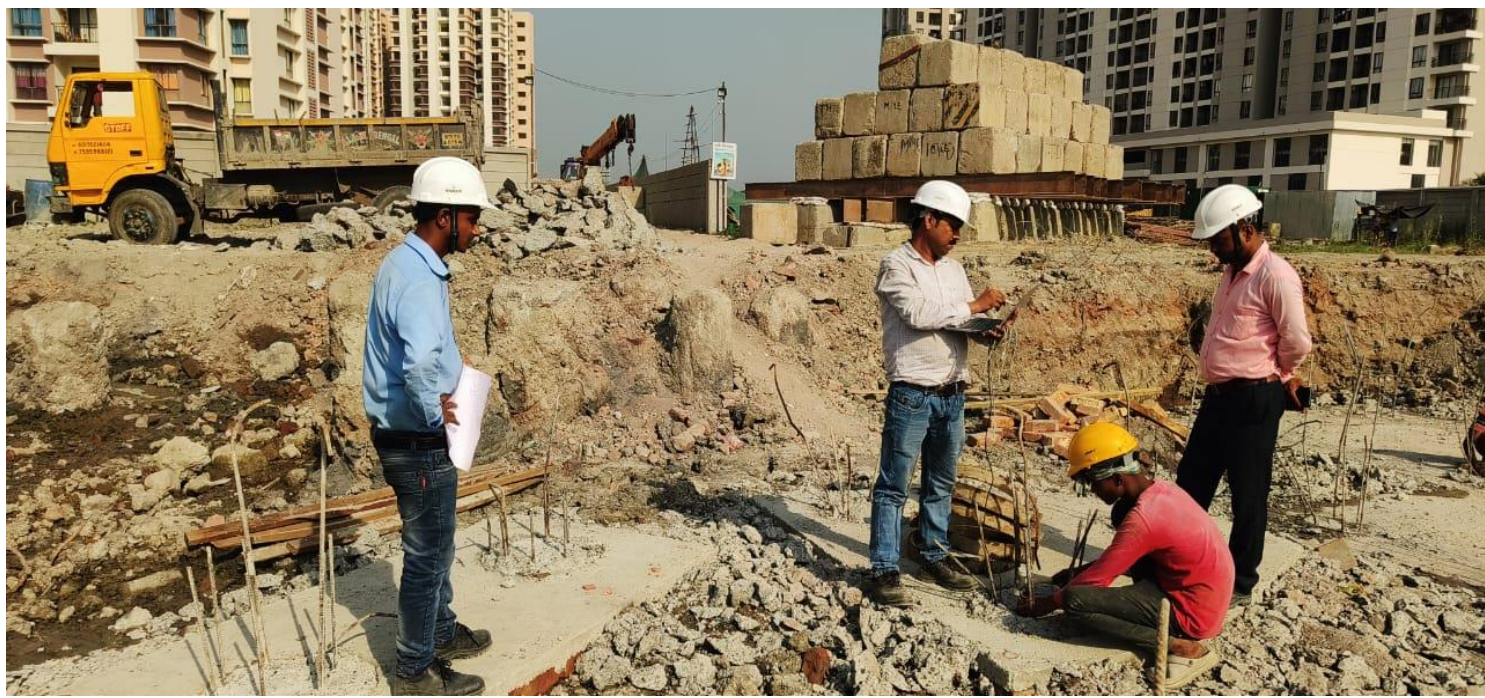
EXCAVATION WORK FOR PILE CAP GRADE BEAM OF BLOCK-1/C-TYPE FLATS.





Central Government Employees Welfare Housing Organisation

PILE INTEGRITY TEST (PET) OF BLOCK-1/C-TYPE FLATS.





Central Government Employees Welfare Housing Organisation

REINFORCEMENT PLACING FOR PILE CAP OF BLOCK-1/C- TYPE FLATS.

