

**CGEWHO – CHENNAI PHASE-III
PROJECT**



MONTHLY PROGRESS REPORT

STATUS AS ON : 31.12.2024

PROGRESS REPORT
CGEWHO – CHENNAI PHASE-III PROJECT

31.12.2024

| BLOCK | STATUS AS ON 31 st DECEMBER-2024 |
|----------|---|
| A1 BLOCK | <p>◆ 100% Completed Works</p> <ul style="list-style-type: none"> ▪ Terrace floor level slab R.C.C ▪ Terrace floor Parapet Columns Concrete. ▪ Lift Head room (4 out of 4) - Slab Concrete. ▪ Over Head Water Tank <ul style="list-style-type: none"> (a) Base Slab Concrete 2 out of 2 (b) Tank Wall Concrete 2 out of 2 (c) Top Cover slab Concrete 2 out of 2 ▪ Block work upto Tenth floor & Parapet wall. ▪ Ceiling Plastering upto Tenth floor. ▪ Wall plastering upto Tenth floor. ▪ 1st Coat Wall Putty upto Tenth floor ▪ Electrical Conducting works in Tenth floor. ▪ Fixing of Water supply pipe Lines (CPVC). ▪ Fixing of Sanitary Lines (PVC). ▪ External Plastering 100% completed in all sides. ▪ Fixing of Vertical Plumbing Lines in Shaft. ▪ Fixing of Bathroom Wall Tiles 100% completed (200/200) ▪ Fixing of Toilet Wall Tiles 100% completed (200/200) ▪ Laying Of Floor Tiles <ul style="list-style-type: none"> a) Ceramic Tiles in Bathrooms 100% completed (200/200) b) Ceramic Tiles in Toilets 100% completed (200/200) ▪ Vitrified Tiles in Halls & Bedrooms 100% completed (200/200). ▪ Fixing of UPVC Windows & Ventilators 100% completed (800 /800). ▪ Fixing of Door Shutters 100% completed (1200/1200). ▪ Kitchen Finishing Works <ul style="list-style-type: none"> a) Fixing of Wall Dados 100% completed (200/200). b) Laying of Granite Countertop 100% completed (200/200). c) Fixing of S.S Sink 100% completed (200/200) ▪ Water Proofing Works. <ul style="list-style-type: none"> a) Over Head Water Tank 100% completed (2 / 2). b) Terrace Water Proofing Work 100% completed. ▪ Laying of Green marble for Staircase 100% completed. ▪ Electrical wire pulling work 100% completed (200/200). ▪ Fixing of Modular Switches & Sockets 100% completed. (200/200) |



PROGRESS REPORT
CGEWHO – CHENNAI PHASE-III PROJECT

| | | |
|--|---|---|
| | <ul style="list-style-type: none"> ▪ Fixing of Window Safety Grills 100% completed. (800 / 800). ▪ Bathroom & Toilet False ceiling work 100% completed. ▪ Fixing of IWC 100% completed (200/200) ▪ Internal Painting <ul style="list-style-type: none"> a) 1st Coat – 100% completed (200/200) ▪ Stilt floor – Grano flooring work completed. ▪ Fixing of Door Hardware fittings. ▪ Electrical Panel & Cable tray fixing works completed. ▪ Firefighting works completed (Application for NOC submitted, Inspection completed). ▪ Fixing of Main Door lock 100% completed (200\200). ▪ Balcony Handrail painting works 100% completed. ▪ Staircase Handrail finishing works 100% completed. | |
| | WORKS ON PROGRESS | WORKS TO BE DONE |
| | <ul style="list-style-type: none"> ▪ Over Head Tank Ring Main connection works 95% completed. ▪ Lift Erection works (Total 4 Lifts) <ul style="list-style-type: none"> a) Lift 1 - 80% completed. b) Lift 2 - 80% completed. c) Lift 3 - 80% completed. d) Lift 4 - 80% completed. ▪ Lift Cladding work 85% completed. ▪ Conducting work for lightening arrester completed. | <ul style="list-style-type: none"> ▪ Fixing of Wash basins ▪ Fixing of Plumbing CP fittings. ▪ Internal Painting 2nd Coating ▪ Lift Commissioning works. ▪ Fixing of EB meters. ▪ Fixing of Electrical fittings in common areas. ▪ Installation of lightening arrester. |



PROGRESS REPORT
CGEWHO – CHENNAI PHASE-III PROJECT

| BLOCK | STATUS AS ON 31st DECEMBER-2024 |
|----------|---|
| A2 BLOCK | <p>◆ 100% Completed Works</p> <ul style="list-style-type: none"> ▪ Terrace floor level slab R.C.C ▪ Terrace floor Parapet Columns Concrete. ▪ Lift Head room (4 out of 4) - Slab Concrete. ▪ Over Head Water Tank <ul style="list-style-type: none"> (a) Base Slab Concrete 2 out of 2 (b) Tank Wall Concrete 2 out of 2 (c) Top Cover slab Concrete 2 out of 2 ▪ Block work upto Tenth floor & Parapet wall. ▪ Ceiling Plastering upto Tenth floor. ▪ Wall plastering upto Tenth floor. ▪ 1st Coat Wall Putty upto Tenth floor ▪ Electrical Conducting works in Tenth floor. ▪ Fixing of Water supply pipe Lines (CPVC). ▪ Fixing of Sanitary Lines (PVC). ▪ External Plastering 100% completed in all sides. ▪ Fixing of Vertical Plumbing Lines in Shaft. ▪ Fixing of Bathroom Wall Tiles 100% completed (200/200) ▪ Fixing of Toilet Wall Tiles 100% completed (200/200) ▪ Laying Of Floor Tiles <ul style="list-style-type: none"> a) Ceramic Tiles in Bathrooms 100% completed (200/200) b) Ceramic Tiles in Toilets 100% completed (200/200) ▪ Vitrified Tiles in Halls & Bedrooms 100% completed (200/200). ▪ Fixing of UPVC Windows & Ventilators 100% completed (800 /800). ▪ Fixing of Door Shutters 100% completed (1200/1200). ▪ Kitchen Finishing Works <ul style="list-style-type: none"> a) Fixing of Wall Dados 100% completed (200/200). b) Laying of Granite Countertop 100% completed (200/200). c) Fixing of S.S Sink 100% completed (200/200) ▪ Water Proofing Works. <ul style="list-style-type: none"> a) Over Head Water Tank 100% completed (2 / 2). b) Terrace Water Proofing Work 100% completed. ▪ Laying of Green marble for Staircase 100% completed. ▪ Electrical wire pulling work 100% completed (200/200). ▪ Fixing of Modular Switches & Sockets 100% completed. (200/200) ▪ Bathroom & Toilet False ceiling work 100% completed. |



PROGRESS REPORT
CGEWHO – CHENNAI PHASE-III PROJECT

| | | |
|--|---|---|
| | <ul style="list-style-type: none"> ▪ Fixing of IWC 100% completed (200/200) ▪ Internal Painting <ul style="list-style-type: none"> a) 1st Coat – 100% completed (200/200) ▪ Stilt floor – Grano flooring work completed. ▪ Fixing of Door Hardware fittings. ▪ Electrical Panel & Cable tray fixing works completed. ▪ Fixing of Window Safety Grills 100% completed. (800 / 800). ▪ Fixing of Main Door lock 100% completed (200\ 200) ▪ Firefighting works completed (Application for NOC submitted, Inspection completed). ▪ Balcony Handrail painting works 100% completed. ▪ Staircase Handrail finishing works 100% completed. | |
| | WORKS ON PROGRESS | WORKS TO BE DONE |
| | <ul style="list-style-type: none"> ▪ Over Head Tank Ring Main connection works 95% completed. ▪ Lift Erection works (Total 4 Lifts) <ul style="list-style-type: none"> a) Lift 1 - 75% completed. b) Lift 2 - 75% completed. c) Lift 3 – 70% completed. d) Lift 4 – 60% completed. ▪ Lift Cladding work 80% completed. ▪ Conducting work for lightening arrester on progress. | <ul style="list-style-type: none"> ▪ Fixing of Wash basins ▪ Fixing of Plumbing CP fittings. ▪ Internal Painting 2nd Coating ▪ Lift Commissioning works. ▪ Fixing of EB meters. ▪ Fixing of Electrical fittings in common areas. ▪ Installation of lightening arrester. |



PROGRESS REPORT
CGEWHO – CHENNAI PHASE-III PROJECT

| BLOCK | STATUS AS ON 31st DECEMBER-2024 |
|----------|---|
| B1 BLOCK | <ul style="list-style-type: none"> ◆ 100% Completed Works <ul style="list-style-type: none"> ▪ Terrace floor level slab R.C.C ▪ Terrace floor Parapet Columns Concrete. ▪ Lift Head room (3 out of 3) - Slab Concrete. ▪ Over Head Water Tank <ul style="list-style-type: none"> (a) Base Slab Concrete (3 out of 3) (b) Wall Concrete (3 out of 3) (c) Top Cover slab (3 out of 3) ▪ Block work upto Tenth floor & Parapet wall. ▪ Ceiling Plastering upto Tenth floor. ▪ Wall plastering upto Tenth floor. ▪ 1st Coat Wall Putty upto Tenth floor. ▪ 2nd Coat Wall Putty upto Tenth floor. ▪ Fixing of Internal Plumbing Line <ul style="list-style-type: none"> a) Water supply pipe Lines (CPVC). b) Sanitary Lines (PVC) ▪ External Plastering in all sides. ▪ Fixing of Vertical Plumbing Line in Shafts <ul style="list-style-type: none"> a) Water supply pipe Lines (G.I). b) Sanitary Lines (PVC). ▪ Fixing of Bathroom Wall Tiles. ▪ Laying Of Floor Tiles <ul style="list-style-type: none"> a) Ceramic Tiles in Bathroom b) Vitrified Tiles in Halls & Bedrooms. c) Vitrified Tiles in Corridor. ▪ Fixing of UPVC Windows. ▪ Fixing of UPVC French Door (without Mosquito mesh shutter) ▪ Fixing of Door Shutters 100% completed (840/840). ▪ Kitchen Finishing Works <ul style="list-style-type: none"> a) Fixing of Wall Dados. b) Laying of Granite Countertop. c) Fixing of S.S Sink. ▪ Water Proofing Works. <ul style="list-style-type: none"> a) Terrace floor Water proofing. b) Over Head Water Tank. ▪ Laying of Green marble for Staircase 100% completed. ▪ Electrical wire pulling work 100% completed (120/120). ▪ Fixing of Modular Switches & Sockets 100% completed. (120/120) |

PROGRESS REPORT
CGEWHO – CHENNAI PHASE-III PROJECT

| | | |
|----------|--|---|
| B1 BLOCK | <ul style="list-style-type: none"> ▪ Fixing of M.S Window Safety Grills 100% completed. ▪ Fixing of Balcony Handrail. ▪ Fixing of Staircase Hand Rails. ▪ Bathroom false ceiling work 100% completed (240 / 240). ▪ Fixing of IWC 100% completed (120/120) ▪ Fixing of EWC 100% completed (120/120) ▪ Lift Cladding works 3 out of 3 100% completed. ▪ Internal Painting <ul style="list-style-type: none"> a) 1st Coat – 100% completed (120/120) ▪ Over Head Tank Ring Main Connection works 100% completed. ▪ Application of Exterior Wall Primer ▪ Electrical Panel & cable tray fixing works completed. ▪ Construction of Earth Pit chambers completed. ▪ Fixing of Door Hardware fittings. ▪ Stilt Grano flooring completed. ▪ Fixing of Main Door lock 100% completed (120 / 120) ▪ Over Head Tank Ring Main connection works. | |
| | WORKS ON PROGRESS | WORKS TO BE DONE |
| | <ul style="list-style-type: none"> ▪ Lift Installation works 90% completed. (3 out 3). ▪ Firefighting works 95% completed. ▪ External Painting- Damp proof elasto paint overall 95% completed. | <ul style="list-style-type: none"> ▪ Fixing of Wash basins ▪ Fixing of Plumbing CP fittings. ▪ Internal Painting 2nd Coating ▪ Lift Commissioning works. ▪ Fixing of EB meters. ▪ Fixing of Electrical fittings in common areas. ▪ Installation of lightening arrester. |



PROGRESS REPORT
CGEWHO – CHENNAI PHASE-III PROJECT

| BLOCK | STATUS AS ON 31st DECEMBER-2024 | |
|----------|---|---|
| B2 BLOCK | <ul style="list-style-type: none"> ◆ 100% Completed Works <ul style="list-style-type: none"> ▪ Terrace floor level slab R.C.C ▪ Terrace floor Parapet Columns Concrete. ▪ Lift Head room (3 out of 3) - Slab Concrete. ▪ Over Head Water Tank <ul style="list-style-type: none"> (a) Base Slab Concrete (3 out of 3) (b) Wall Concrete (3 out of 3) (c) Top Cover slab (3 out of 3) ▪ Block work upto Tenth floor & Parapet wall. ▪ Ceiling Plastering upto Tenth floor. ▪ Wall plastering upto Tenth floor. ▪ 1st Coat Wall Putty upto Tenth floor. ▪ Fixing of Internal Plumbing Line <ul style="list-style-type: none"> a) Water supply pipe Lines (CPVC). b) Sanitary Lines (PVC) ▪ Fixing of Vertical Plumbing Line in Shafts <ul style="list-style-type: none"> a) Water supply pipe Lines (G.I). b) Sanitary Lines (PVC). ▪ Water Proofing Works. <ul style="list-style-type: none"> a) Over Head Water Tank. b) Terrace Water Proofing works completed. | |
| B2 BLOCK | WORKS ON PROGRESS | WORKS TO BE DONE |
| B2 BLOCK | <ul style="list-style-type: none"> ▪ 2nd Coat Wall Putty 66% completed (80 / 120). ▪ External Plastering 96% completed. ▪ Fixing of Bathroom Wall Tiles 92% completed (220/ 240). ▪ Laying Of Floor Tiles <ul style="list-style-type: none"> a) Ceramic Tiles in Bathroom 92% completed (220 / 240). b) Vitrified Tiles in Halls & Bedrooms 92% completed (110/120) ▪ Fixing of UPVC Windows 78% completed. (378/480). ▪ Fixing of UPVC French Doors 74% completed (178/240). | <ul style="list-style-type: none"> ▪ Lift Cladding works. ▪ Laying of Staircase Green marble. ▪ Internal Electrification works <ul style="list-style-type: none"> a) Electrical wire pulling work. b) Fixing of Modular Switches & Sockets. ▪ Fixing of Window safety grills (Fabrication on process) ▪ Overhead Tank -Ring main works ▪ Fixing of EWC ▪ Fixing of Wash basins. ▪ Fixing of Door Hardware fittings. ▪ Fixing of Main Door lock ▪ Fixing of Plumbing CP fittings. |



PROGRESS REPORT
CGEWHO – CHENNAI PHASE-III PROJECT

| | | |
|--------------|--|---|
| | <ul style="list-style-type: none"> ▪ Fixing of Flush door shutters 95% completed (800 / 840) ▪ Kitchen Finishing Works <ul style="list-style-type: none"> a) Laying of Granite Countertop 100% completed (120 / 120). b) Fixing of Kitchen wall Dados 84% completed (100/120). c) Fixing of S.S Sink 100% completed (120/120) ▪ Firefighting works 45% completed. ▪ Bathroom false ceiling work 84% completed (200/240). ▪ Lift Installation works (Lift Materials received - 3 out of 3). <ul style="list-style-type: none"> a) Lift 1 – Scaffolding work completed. ▪ Stilt Grano flooring 30% completed. | <ul style="list-style-type: none"> ▪ Internal Painting 2nd Coating ▪ Lift Commissioning works. ▪ Fixing of EB meters. ▪ Fixing of Electrical fittings in common areas. ▪ Installation of lightening arrester. |
| BLOCK | STATUS AS ON 31st DECEMBER-2024 | |
| C1 BLOCK | <ul style="list-style-type: none"> ◆ 100% Completed Works <ul style="list-style-type: none"> ▪ Terrace floor level slab R.C.C ▪ Terrace floor Parapet Columns Concrete. ▪ Lift Head room (4 out of 4) - Slab Concrete. ▪ Over Head Water Tank <ul style="list-style-type: none"> (a) Base Slab Concrete (3 out of 3) (b) Wall Concrete (3 out of 3) (c) Top Cover slab (3 out of 3) ▪ Block work upto Tenth floor & Parapet wall. ▪ Ceiling Plastering upto Tenth floor. ▪ Wall plastering upto Tenth floor. ▪ 1st Coat Wall Putty upto Tenth floor. ▪ 2nd Coat Wall Putty upto Tenth floor. ▪ Fixing of Internal Plumbing Line <ul style="list-style-type: none"> a) Water supply pipe Lines (CPVC). b) Sanitary Lines (PVC) ▪ External Plastering in all sides. ▪ Fixing of Vertical Plumbing Line in Shafts <ul style="list-style-type: none"> a) Water supply pipe Lines (G.I). b) Sanitary Lines (PVC). ▪ Fixing of Bathroom Wall Tiles. | |



PROGRESS REPORT

CGEWHO – CHENNAI PHASE-III PROJECT

| | |
|----------|--|
| C1 BLOCK | <ul style="list-style-type: none">▪ Laying Of Floor Tiles<ul style="list-style-type: none">a) Ceramic Tiles in Bathroomb) Vitrified Tiles in Halls & Bedrooms.c) Vitrified Tiles in Corridor.▪ Fixing of UPVC Windows.▪ Fixing of UPVC French Door (without Mosquito mesh shutter)▪ Fixing of Door Shutters 100% completed (1080/1080).▪ Kitchen Finishing Works<ul style="list-style-type: none">a) Fixing of Wall Dados.b) Laying of Granite Countertop.c) Fixing of S.S Sink.▪ Water Proofing Works.<ul style="list-style-type: none">a) Terrace floor Water proofing.b) Over Head Water Tank.▪ Laying of Green marble for Staircase 100% completed.▪ Electrical wire pulling work 100% completed (120/120).▪ Fixing of Modular Switches & Sockets 100% completed. (120/120)▪ Fixing of M.S Window Safety Grills 100% completed.▪ Fixing of Balcony Handrail.▪ Fixing of Staircase Hand Rails.▪ Bathroom false ceiling work 100% completed (360 / 360).▪ Fixing of IWC 100% completed (120/120)▪ Fixing of EWC 100% completed (240/240)▪ Lift Cladding works 4 out of 4 100% completed.▪ Internal Painting<ul style="list-style-type: none">a) 1st Coat – 100% completed (120/120)▪ External Damp proof elasto painting completed.▪ Over Head Tank Ring Main Connection works completed.▪ Fixing of Door Hardware Fittings completed.▪ Fixing of Main Door Lock completed.▪ Plumbing shaft top covering completed.▪ Stilt Grano flooring works completed.▪ Electrical Panel & Cable tray fixing works completed.▪ Construction of Earth Pit chambers completed.▪ Fixing of Wash basins 100% completed.▪ Firefighting works completed (Application for NOC submitted, Inspection completed). |
|----------|--|



PROGRESS REPORT
CGEWHO – CHENNAI PHASE-III PROJECT

| | WORKS ON PROGRESS | WORKS TO BE DONE |
|----------|---|--|
| | <ul style="list-style-type: none"> ▪ Lift Installation works 90% completed. (4 out of 4). ▪ Conducting work for lightening arrester on progress. | <ul style="list-style-type: none"> ▪ Internal Painting 2nd Coating ▪ Fixing of Plumbing CP fittings. ▪ Lift Commissioning works. ▪ Fixing of EB meters. ▪ Fixing of Electrical fittings in common areas. ▪ Installation of lightening arrester. |
| BLOCK | STATUS AS ON 31st DECEMBER-2024 | |
| C2 BLOCK | <ul style="list-style-type: none"> ◆ 100% Completed Works <ul style="list-style-type: none"> ▪ Terrace floor level slab R.C.C ▪ Terrace floor Parapet Columns Concrete. ▪ Lift Head room (4 out of 4) - Slab Concrete. ▪ Over Head Water Tank <ul style="list-style-type: none"> (a) Base Slab Concrete (3 out of 3) (b) Wall Concrete (3 out of 3) (c) Top Cover slab (3 out of 3) ▪ Block work upto Tenth floor & Parapet wall. ▪ Ceiling Plastering upto Tenth floor. ▪ Wall plastering upto Tenth floor. ▪ 1st Coat Wall Putty upto Tenth floor. ▪ 2nd Coat Wall Putty upto Tenth floor. ▪ Fixing of Internal Plumbing Line <ul style="list-style-type: none"> a) Water supply pipe Lines (CPVC). b) Sanitary Lines (PVC) ▪ External Plastering in all sides. ▪ Fixing of Vertical Plumbing Line in Shafts <ul style="list-style-type: none"> a) Water supply pipe Lines (G.I). b) Sanitary Lines (PVC). ▪ Fixing of Bathroom Wall Tiles. ▪ Laying Of Floor Tiles <ul style="list-style-type: none"> a) Ceramic Tiles in Bathroom b) Vitrified Tiles in Halls & Bedrooms. c) Vitrified Tiles in Corridor. ▪ Fixing of UPVC Windows. ▪ Fixing of UPVC French Door (without Mosquito mesh shutter) | |



PROGRESS REPORT
CGEWHO – CHENNAI PHASE-III PROJECT

| | | | |
|--------------------------|--|--------------------------|-------------------------|
| C2 BLOCK | <ul style="list-style-type: none"> ▪ Fixing of Door Shutters 100% completed (1080/1080). ▪ Kitchen Finishing Works <ul style="list-style-type: none"> a) Fixing of Wall Dados. b) Laying of Granite Countertop. c) Fixing of S.S Sink. ▪ Water Proofing Works. <ul style="list-style-type: none"> a) Terrace floor Water proofing. b) Over Head Water Tank. ▪ Laying of Green marble for Staircase 100% completed. ▪ Electrical wire pulling work 100% completed (120/120). ▪ Fixing of Modular Switches & Sockets 100% completed. (120/120) ▪ Fixing of M.S Window Safety Grills 100% completed. ▪ Fixing of Balcony Handrail. ▪ Fixing of Staircase Hand Rails. ▪ Bathroom false ceiling work 100% completed (360 / 360). ▪ Fixing of IWC 100% completed (120/120) ▪ Fixing of EWC 100% completed (240/240) ▪ Lift Cladding works 4 out of 4 100% completed. ▪ Internal Painting <ul style="list-style-type: none"> a) 1st Coat – 100% completed (120/120) ▪ Over Head Tank Ring Main Connection works completed. ▪ Fixing of Door Hardware Fittings completed. ▪ Fixing of Main Door Lock completed. ▪ Plumbing shaft top covering completed. ▪ Stilt Grano flooring works completed. ▪ Electrical Panel & Cable tray fixing works completed. ▪ Construction of Earth Pit chambers completed. ▪ Firefighting works completed (Application for NOC submitted, Inspection completed). | | |
| | <table border="1" style="width: 100%; border-collapse: collapse;"> <tr> <td style="width: 50%; text-align: center;">WORKS ON PROGRESS</td> <td style="width: 50%; text-align: center;">WORKS TO BE DONE</td> </tr> </table> | WORKS ON PROGRESS | WORKS TO BE DONE |
| WORKS ON PROGRESS | WORKS TO BE DONE | | |



PROGRESS REPORT
CGEWHO – CHENNAI PHASE-III PROJECT

| | | |
|--------------|---|---|
| | <ul style="list-style-type: none"> ▪ Lift Installation works 90% completed. (3 out 3) ▪ . Fixing of Wash basins 50% completed (180/360). | <ul style="list-style-type: none"> ▪ Internal Painting 2nd Coating ▪ Fixing of Plumbing CP fittings. ▪ Lift Commissioning works. ▪ Fixing of EB meters. ▪ Fixing of Electrical fittings in common areas. ▪ Installation of lightening arrester |
| BLOCK | STATUS AS ON 31st DECEMBER-2024 | |
| C3 BLOCK | <ul style="list-style-type: none"> ◆ 100% Completed Works <ul style="list-style-type: none"> ▪ Terrace floor level slab R.C.C ▪ Terrace floor Parapet Columns Concrete. ▪ Lift Head room (4 out of 4) - Slab Concrete. ▪ Over Head Water Tank <ul style="list-style-type: none"> (a) Base Slab Concrete (3 out of 3) (b) Wall Concrete (3 out of 3) (c) Top Cover slab (3 out of 3) ▪ Block work upto Tenth floor & Parapet wall. ▪ Ceiling Plastering upto Tenth floor. ▪ Wall plastering upto Tenth floor. ▪ 1st Coat Wall Putty upto Tenth floor. ▪ 2nd Coat Wall Putty upto Tenth floor. ▪ Fixing of Internal Plumbing Line <ul style="list-style-type: none"> a) Water supply pipe Lines (CPVC). b) Sanitary Lines (PVC) ▪ External Plastering in all sides. ▪ Fixing of Vertical Plumbing Line in Shafts <ul style="list-style-type: none"> a) Water supply pipe Lines (G.I). b) Sanitary Lines (PVC). ▪ Fixing of Bathroom Wall Tiles. ▪ Laying Of Floor Tiles <ul style="list-style-type: none"> a) Ceramic Tiles in Bathroom b) Vitrified Tiles in Halls & Bedrooms. c) Vitrified Tiles in Corridor. ▪ Fixing of UPVC Windows. ▪ Fixing of UPVC French Door (without Mosquito mesh shutter) ▪ Fixing of Door Shutters 100% completed (900/900). ▪ Kitchen Finishing Works | |



PROGRESS REPORT
CGEWHO – CHENNAI PHASE-III PROJECT

| | | |
|----------|---|--|
| C3 BLOCK | <ul style="list-style-type: none"> a) Fixing of Wall Dados. b) Laying of Granite Countertop. c) Fixing of S.S Sink. ▪ Water Proofing Works. <ul style="list-style-type: none"> a) Terrace floor Water proofing. b) Over Head Water Tank. ▪ Laying of Green marble for Staircase 100% completed. ▪ Electrical wire pulling work 100% completed (100/100). ▪ Fixing of Modular Switches & Sockets 100% completed. (100/100) ▪ Fixing of M.S Window Safety Grills 100% completed. ▪ Fixing of Balcony Handrail. ▪ Fixing of Staircase Hand Rails. ▪ Bathroom false ceiling work 100% completed (300 / 300). ▪ Fixing of IWC 100% completed (100/100) ▪ Lift Cladding works 4 out of 4 100% completed. ▪ Internal Painting <ul style="list-style-type: none"> a) 1st Coat – 100% completed (120/120) ▪ Over Head Tank Ring Main Connection works completed. ▪ Fixing of Door Hardware Fittings completed. ▪ Fixing of Main Door Lock completed. ▪ Plumbing shaft top covering completed. ▪ Stilt Grano flooring works completed. ▪ Electrical Panel & Cable tray fixing works completed. ▪ Construction of Earth Pit chambers completed. ▪ Firefighting works completed (Application for NOC submitted, Inspection completed). | |
| | WORKS ON PROGRESS | WORKS TO BE DONE |
| | <ul style="list-style-type: none"> ▪ Lift Installation works 90% completed. (4 out 4) | <ul style="list-style-type: none"> ▪ Fixing of Wash basins. ▪ Internal Painting 2nd Coating ▪ Fixing of Plumbing CP fittings. ▪ Lift Commissioning works. ▪ Fixing of EB meters. ▪ Fixing of Electrical fittings in common areas. ▪ Installation of lightening arrester. |



PROGRESS REPORT
CGEWHO – CHENNAI PHASE-III PROJECT

| BLOCK | STATUS AS ON 31st DECEMBER-2024 |
|----------|---|
| D1 BLOCK | <ul style="list-style-type: none"> ◆ 100% Completed Works <ul style="list-style-type: none"> ▪ Terrace floor level slab R.C.C ▪ Terrace floor Parapet Columns Concrete. ▪ Lift Head room (4 out of 4) - Slab Concrete. ▪ Over Head Water Tank <ul style="list-style-type: none"> (a) Base Slab Concrete (3 out of 3) (b) Wall Concrete (3 out of 3) (c) Top Cover slab (3 out of 3) ▪ Block work upto Tenth floor & Parapet wall. ▪ Ceiling Plastering upto Tenth floor. ▪ Wall plastering upto Tenth floor. ▪ 1st Coat Wall Putty upto Tenth floor. ▪ 2nd Coat Wall Putty upto Tenth floor. ▪ Fixing of Internal Plumbing Line <ul style="list-style-type: none"> a) Water supply pipe Lines (CPVC). b) Sanitary Lines (PVC) ▪ External Plastering in all sides. ▪ Fixing of Vertical Plumbing Line in Shafts <ul style="list-style-type: none"> a) Water supply pipe Lines (G.I). b) Sanitary Lines (PVC). ▪ Fixing of Bathroom Wall Tiles. ▪ Laying Of Floor Tiles <ul style="list-style-type: none"> a) Ceramic Tiles in Bathroom b) Vitrified Tiles in Halls & Bedrooms. c) Vitrified Tiles in Corridor. ▪ Fixing of UPVC Windows. ▪ Fixing of UPVC French Door (without Mosquito mesh shutter) ▪ Fixing of Door Shutters 100% completed (900/900). ▪ Kitchen Finishing Works <ul style="list-style-type: none"> a) Fixing of Wall Dados. b) Laying of Granite Countertop. c) Fixing of S.S Sink. ▪ Water Proofing Works. <ul style="list-style-type: none"> a) Terrace floor Water proofing. b) Over Head Water Tank. ▪ Laying of Green marble for Staircase 100% completed. ▪ Electrical wire pulling work 100% completed (80/80). ▪ Fixing of Modular Switches & Sockets 100% completed. (80/80) |



PROGRESS REPORT
CGEWHO – CHENNAI PHASE-III PROJECT

| | | |
|----------|---|--|
| D1 BLOCK | <ul style="list-style-type: none"> ▪ Fixing of M.S Window Safety Grills 100% completed. ▪ Fixing of Balcony Handrail. ▪ Fixing of Staircase Hand Rails. ▪ Bathroom false ceiling work 100% completed (320 / 320). ▪ Fixing of IWC 100% completed (80/800) ▪ Fixing of EWC 100% completed (240/240) ▪ Lift Cladding works 4 out of 4 100% completed. ▪ Internal Painting <ul style="list-style-type: none"> b) 1st Coat – 100% completed (80/80) ▪ Over Head Tank Ring Main Connection works completed. ▪ Fixing of Door Hardware Fittings completed. ▪ Fixing of Main Door Lock completed. ▪ Stilt flooring works completed. ▪ Electrical Panel & Cable tray fixing works completed. ▪ Construction of Earth Pit chambers completed. ▪ Fixing of Wash basins completed. ▪ Firefighting works completed. (NOC from Fire Department obtained) | |
| | WORKS ON PROGRESS | WORKS TO BE DONE |
| | <ul style="list-style-type: none"> ▪ Lift Installation works <ul style="list-style-type: none"> a) 3 Lifts - 90% completed. b) 4th Lift - 85% completed. ▪ Cabling work for lightening arrester on progress. | <ul style="list-style-type: none"> ▪ Internal Painting 2nd Coating ▪ Fixing of Plumbing CP fittings. ▪ Lift Commissioning works. ▪ Fixing of EB meters. ▪ Fixing of Electrical fittings in common areas. ▪ Installation of lightening arrester. |



PROGRESS REPORT
CGEWHO – CHENNAI PHASE-III PROJECT

| BLOCK | STATUS AS ON 31st DECEMBER-2024 |
|----------|---|
| D2 BLOCK | <ul style="list-style-type: none"> ◆ 100% Completed Works <ul style="list-style-type: none"> ▪ Terrace floor level slab R.C.C ▪ Terrace floor Parapet Columns Concrete. ▪ Lift Head room (4 out of 4) - Slab Concrete. ▪ Over Head Water Tank <ul style="list-style-type: none"> (a) Base Slab Concrete (3 out of 3) (b) Wall Concrete (3 out of 3) (c) Top Cover slab (3 out of 3) ▪ Block work upto Tenth floor & Parapet wall. ▪ Ceiling Plastering upto Tenth floor. ▪ Wall plastering upto Tenth floor. ▪ 1st Coat Wall Putty upto Tenth floor. ▪ 2nd Coat Wall Putty upto Tenth floor. ▪ Fixing of Internal Plumbing Line <ul style="list-style-type: none"> a) Water supply pipe Lines (CPVC). b) Sanitary Lines (PVC) ▪ External Plastering in all sides. ▪ Fixing of Vertical Plumbing Line in Shafts <ul style="list-style-type: none"> a) Water supply pipe Lines (G.I). b) Sanitary Lines (PVC). ▪ Fixing of Bathroom Wall Tiles. ▪ Laying Of Floor Tiles <ul style="list-style-type: none"> a) Ceramic Tiles in Bathroom b) Vitrified Tiles in Halls & Bedrooms. c) Vitrified Tiles in Corridor. ▪ Fixing of UPVC Windows. ▪ Fixing of UPVC French Door (without Mosquito mesh shutter) ▪ Fixing of Door Shutters 100% completed (900/900). ▪ Kitchen Finishing Works <ul style="list-style-type: none"> a) Fixing of Wall Dados. b) Laying of Granite Countertop. c) Fixing of S.S Sink. ▪ Water Proofing Works. <ul style="list-style-type: none"> a) Terrace floor Water proofing. b) Over Head Water Tank. ▪ Laying of Green marble for Staircase 100% completed. ▪ Electrical wire pulling work 100% completed (80/80). ▪ Fixing of Modular Switches & Sockets 100% completed. (80/80) |

PROGRESS REPORT
CGEWHO – CHENNAI PHASE-III PROJECT

| | | |
|----------|--|---|
| D2 BLOCK | <ul style="list-style-type: none"> ▪ Fixing of M.S Window Safety Grills 100% completed. ▪ Fixing of Balcony Handrail. ▪ Fixing of Staircase Hand Rails. ▪ Bathroom false ceiling work 100% completed (320 / 320). ▪ Fixing of IWC 100% completed (80/800) ▪ Fixing of EWC 100% completed (240/240) ▪ Fixing of Wash basins 100% completed (240/240) ▪ Lift Erection works 4 out of 4 completed. ▪ Lift Cladding works 4 out of 4 100% completed. ▪ Internal Painting <ul style="list-style-type: none"> a) 1st Coat – 100% completed (80/80) ▪ Over Head Tank Ring Main Connection works completed. ▪ Fixing of Door Hardware Fittings completed. ▪ Fixing of Main Door Lock completed. ▪ Stilt flooring works completed. ▪ Lift Slow speed commissioning 4 out of 4 completed. ▪ Electrical Panel & Cable tray fixing works completed. ▪ Construction of Earth Pit chambers completed. ▪ Firefighting works completed. (NOC from Fire Department obtained). | |
| | WORKS ON PROGRESS | WORKS TO BE DONE |
| | <ul style="list-style-type: none"> ▪ Cabling work for lightening arrester on progress. | <ul style="list-style-type: none"> ▪ Internal Painting 2nd Coating ▪ Fixing of Plumbing CP fittings. ▪ Lift Commissioning works (High Speed). ▪ Fixing of EB meters. ▪ Fixing of Electrical fittings in common areas. |



PROGRESS REPORT
CGEWHO – CHENNAI PHASE-III PROJECT

| BLOCK | STATUS AS ON 31st DECEMBER-2024 |
|----------|---|
| D3 BLOCK | <ul style="list-style-type: none"> ◆ 100% Completed Works <ul style="list-style-type: none"> ▪ Terrace floor level slab R.C.C ▪ Terrace floor Parapet Columns Concrete. ▪ Lift Head room (4 out of 4) - Slab Concrete. ▪ Over Head Water Tank <ul style="list-style-type: none"> (a) Base Slab Concrete (3 out of 3) (b) Wall Concrete (3 out of 3) (c) Top Cover slab (3 out of 3) ▪ Block work upto Tenth floor & Parapet wall. ▪ Ceiling Plastering upto Tenth floor. ▪ Wall plastering upto Tenth floor. ▪ 1st Coat Wall Putty upto Tenth floor. ▪ 2nd Coat Wall Putty upto Tenth floor. ▪ Fixing of Internal Plumbing Line <ul style="list-style-type: none"> a) Water supply pipe Lines (CPVC). b) Sanitary Lines (PVC) ▪ External Plastering in all sides. ▪ Fixing of Vertical Plumbing Line in Shafts <ul style="list-style-type: none"> a) Water supply pipe Lines (G.I). b) Sanitary Lines (PVC). ▪ Fixing of Bathroom Wall Tiles. ▪ Laying Of Floor Tiles <ul style="list-style-type: none"> a) Ceramic Tiles in Bathroom b) Vitrified Tiles in Halls & Bedrooms. c) Vitrified Tiles in Corridor. ▪ Fixing of UPVC Windows. ▪ Fixing of UPVC French Door (without Mosquito mesh shutter) ▪ Fixing of Door Shutters 100% completed (900/900). ▪ Kitchen Finishing Works <ul style="list-style-type: none"> a) Fixing of Wall Dados. b) Laying of Granite Countertop. c) Fixing of S.S Sink. ▪ Water Proofing Works. <ul style="list-style-type: none"> a) Terrace floor Water proofing. b) Over Head Water Tank. ▪ Laying of Green marble for Staircase 100% completed. ▪ Electrical wire pulling work 100% completed (80/80). ▪ Fixing of Modular Switches & Sockets 100% completed. (80/80) |



PROGRESS REPORT
CGEWHO – CHENNAI PHASE-III PROJECT

| | | |
|----------------|---|--|
| D3 BLOCK | <ul style="list-style-type: none"> ▪ Fixing of M.S Window Safety Grills 100% completed. ▪ Fixing of Balcony Handrail. ▪ Fixing of Staircase Hand Rails. ▪ Bathroom false ceiling work 100% completed (320 / 320). ▪ Fixing of IWC 100% completed (80/800) ▪ Fixing of EWC 100% completed (240/240) ▪ Lift Cladding works 4 out of 4 100% completed. ▪ Internal Painting <ul style="list-style-type: none"> a) 1st Coat – 100% completed (80/80) ▪ Over Head Tank Ring Main Connection works completed. ▪ Fixing of Door Hardware Fittings completed. ▪ Fixing of Main Door Lock completed. ▪ Stilt flooring works completed. ▪ Electrical Panel & Cable tray fixing works completed. ▪ Construction of Earth Pit chambers completed. ▪ Firefighting works completed. (NOC from Fire Department obtained) | |
| | WORKS ON PROGRESS | WORKS TO BE DONE |
| | <ul style="list-style-type: none"> ▪ Lift Installation works <ul style="list-style-type: none"> a) 4 Lifts - 90% completed. ▪ Fixing of Wash basins 83% completed. (200 / 240) | <ul style="list-style-type: none"> ▪ Internal Painting 2nd Coating ▪ Fixing of Plumbing CP fittings. ▪ Lift Commissioning works. ▪ Fixing of EB meters. ▪ Fixing of Electrical fittings in common areas. ▪ Installation of lightening arrester. |
| BLOCK | STATUS AS ON 31st DECEMBER-2024 | |
| COMMUNITY HALL | <ul style="list-style-type: none"> ◆ 100% Completed Works <ul style="list-style-type: none"> ▪ Terrace floor level slab R.C.C ▪ Terrace floor Parapet Columns Concrete. ▪ Lift Head room (2 out of 2) - Slab Concrete. ▪ Over Head Water Tank <ul style="list-style-type: none"> (a) Base Slab Concrete (b) Tank Wall Concrete (c) Top Cover slab Concrete. ▪ Block work upto Fourth floor & Parapet wall. ▪ Ceiling Plastering upto Fourth floor. | |



PROGRESS REPORT

CGEWHO – CHENNAI PHASE-III PROJECT

| | | |
|----------------|--|---|
| COMMUNITY HALL | <ul style="list-style-type: none"> ▪ Wall plastering upto Fourth floor. ▪ 1st Coat Wall Putty upto Fourth floor. ▪ 2nd Coat Wall Putty upto Fourth floor. ▪ Fixing of Balcony Handrail. ▪ Fixing of Staircase Hand Rails ▪ Fixing of Internal Plumbing Line <ul style="list-style-type: none"> a) Water supply pipe Lines (CPVC). b) Sanitary Lines (PVC) ▪ Fixing of Vertical Plumbing Line in Shafts <ul style="list-style-type: none"> a) Water supply pipe Lines (G.I). b) Sanitary Lines (PVC). ▪ Fixing of Bathroom Wall Tiles. ▪ Laying Of Floor Tiles <ul style="list-style-type: none"> a) Vitrified Floor Tiles in Main Hall & other rooms b) Ceramic Floor Tiles in Bathrooms. c) Kota Stone in Staircase & Lobby ▪ Fixing of UPVC Windows. ▪ Fixing of Wooden flush Door for rooms. ▪ Fixing of Fire Safety Door for Hall Main Entrance ▪ External Plastering in all sides. ▪ Water Proofing Works. <ul style="list-style-type: none"> a) Terrace floor Water proofing. b) Over Head Water Tank. ▪ Lift Installation works 2 out 2 100% completed. ▪ Lift Cladding works 2 out of 2 – 100% completed. ▪ Application of Exterior Wall Primer.-100% completed. ▪ External Damp proof elasto painting completed. ▪ Firefighting works all completed. (NOC from Fire Department obtained) ▪ Lift commissioning works. <ul style="list-style-type: none"> a) Lift 1 - High Speed completed. | |
| | WORKS ON PROGRESS | WORKS TO BE DONE |
| COMMUNITY HALL | <ul style="list-style-type: none"> ▪ Lift commissioning works. <ul style="list-style-type: none"> a) Lift 2 - Slow Speed completed ▪ External painting final coat 90% completed. | <ul style="list-style-type: none"> ▪ Fixing of Wash basins & urinals ▪ Internal Painting 2nd Coating. ▪ Fixing of Plumbing CP fittings. ▪ Lift -2 High speed Commissioning. ▪ Fixing of EB meters. ▪ Fixing of Electrical fittings in Hall, rooms & common areas |



PROGRESS REPORT
CGEWHO – CHENNAI PHASE-III PROJECT

| STATUS AS ON 31st DECEMBER-2024 | |
|----------------------------------|--|
| EXTERNAL DEVELOPMENT WORKS | <ul style="list-style-type: none"> ➤ Underground Sump-1 (Near B-Block) <ul style="list-style-type: none"> ▪ All R.C.C works 100% completed. ▪ Outer Wall Waterproof plastering – 100% completed. ▪ Inner Wall Waterproof plastering – 100% completed. ▪ Fixing of Ladder in Pump room completed. ▪ Fixing & installation of Pumps completed. ▪ WTP Materials received. Installation of WTP 90% completed. ➤ Underground Sump-2 (Near D-Block) <ul style="list-style-type: none"> ▪ All R.C.C works 100% completed. ▪ Outer Wall Waterproof plastering – 100% completed. ▪ Inner Wall Waterproof plastering 100% completed. ▪ Fixing of Ladder in Pump room completed. ▪ Fixing & installation of Pumps completed. ▪ WTP Materials received. Installation of WTP 90% completed. ➤ Sewage Treatment Plant-2 (Near D-Block) <ul style="list-style-type: none"> ▪ All R.C.C works 100% completed. ▪ STP Pump Room completed. ▪ Outer wall Waterproof plastering 100% completed. ▪ Inner Wall Waterproof plastering 100% completed. ▪ Installation of STP 90% completed. ➤ Sewage Treatment Plant-1 (Near C3-Block) <ul style="list-style-type: none"> ▪ All R.C.C works 100% completed. ▪ Pump room block work & plastering completed. ▪ Internal Waterproof plastering 60% completed. ▪ STP components received. Installation process started. ➤ Laying of External Sewer lines <ul style="list-style-type: none"> ▪ Type ‘D’ All Blocks – 100% completed. ▪ Type ‘C’ All Blocks – 95% completed. ▪ Type ‘A’ All Blocks – 95% completed. ▪ B1 Block - 95% completed. ▪ B2 Block - 75% completed. ➤ Laying of External Water Supply lines <ul style="list-style-type: none"> ▪ Type ‘D’ All Blocks – 95% completed. ▪ Type ‘C’ All Blocks – 95% completed. ▪ Type ‘A’ All Blocks – 95% completed. ▪ B1 Block - 95% completed. ▪ B2 Block – 75% completed. |

PROGRESS REPORT

CGEWHO – CHENNAI PHASE-III PROJECT

| | |
|----------------------------------|---|
| EXTERNAL DEVELOPMENT WORKS | <ul style="list-style-type: none">➤ Laying of Storm Water Drainage.<ul style="list-style-type: none">▪ Type ‘D’ All Blocks – 95% completed.▪ Type ‘C’ All Blocks – 90% completed.▪ Type ‘A’ All Blocks – 90% completed.▪ B1 Block – 95% completed.▪ B2 Block – 60% completed.➤ External Electrification works.<ul style="list-style-type: none">▪ Total 8 Nos Transformers received out of 10 Nos.▪ Fixing of Pole structure for Transformers – All ‘A’, ‘B’, ‘D’ type blocks 100% completed. ‘C2’, ‘C3’ blocks – 100% completed.▪ Fixing of Single poles - 90% completed.▪ Erection of Transformers – 80% completed.▪ Installation of Over Head Power line - In Type – A, B, C & D Blocks – 90% completed.▪ Foundation platform for Diesel Generators & Erection of D.Gs completed.➤ Laying of Roads.<ul style="list-style-type: none">▪ Formation of Sub-Grade<ol style="list-style-type: none">a) Around Type D All Blocks – 100% completed.b) Around Type C1 Block – 100% completed.c) Around Type C2 Block – 100% completedd) Around Type C3 Block – 90% completede) Around Type A1 Block – 100% completed.f) Around Type A2 Block – 100% completed.g) Around Community Hall – 100% completed.h) Around Type B1 Block – 50% completed.i) Around Type B2 Block – 25% completed.▪ Laying of Granular Sub Base (GSB)<ol style="list-style-type: none">a) Around Type D All Blocks – 100% completed.b) Around Type C1 Block – 90% completed.c) Around Type C2 Block – 95% completedd) Around Type C3 Block – 85% completede) Around Type A1 Block – 95% completed.j) Around Type A2 Block – 100% completed.k) Around Community Hall – 100% completed.▪ Laying of Wet Mix Macadam (WMM)<ol style="list-style-type: none">a) Around Type D All Blocks – 80% completed.b) Around Type C1 Block – 90% completed.c) Around Type C2 Block – 95% completedd) Around Type C3 Block – 75% completede) Around Type A1 Block – 50% completed.a) Around Type A2 Block – 100% completed. |
|----------------------------------|---|

PROGRESS REPORT CGEWHO – CHENNAI PHASE-III PROJECT

PHOTOGRAPHS OF WORK PROGRESS AS ON 31st DECEMBER 2024

Community Hall: External Damp proof Elasto Painting completed. Storm water drainage work on progress.



Block A1: Laying of PCC around blocks completed.



PROGRESS REPORT

CGEWHO – CHENNAI PHASE-III PROJECT

Block A2 : Installation work for 4th Lift on progress & Lift cladding works on progress.



Block B1: Laying of PCC around Block stilt floor completed.



PROGRESS REPORT

CGEWHO – CHENNAI PHASE-III PROJECT

Block B2 : Stilt floor PCC on progress . Fixing of UPVC Windows & ceiling putty work on progress.



PROGRESS REPORT

CGEWHO – CHENNAI PHASE-III PROJECT

Block C1: Laying of Storm water drainage in East side on progress.



Block C2: Fixing of fuses in E.B Panel on progress.



PROGRESS REPORT

CGEWHO – CHENNAI PHASE-III PROJECT

Block C3: Fixing of fuses in E.B Panel on progress. Laying of Kerb stones in landscape area on progress.



Block D1: Fixing of fuses in E.B Panel on progress



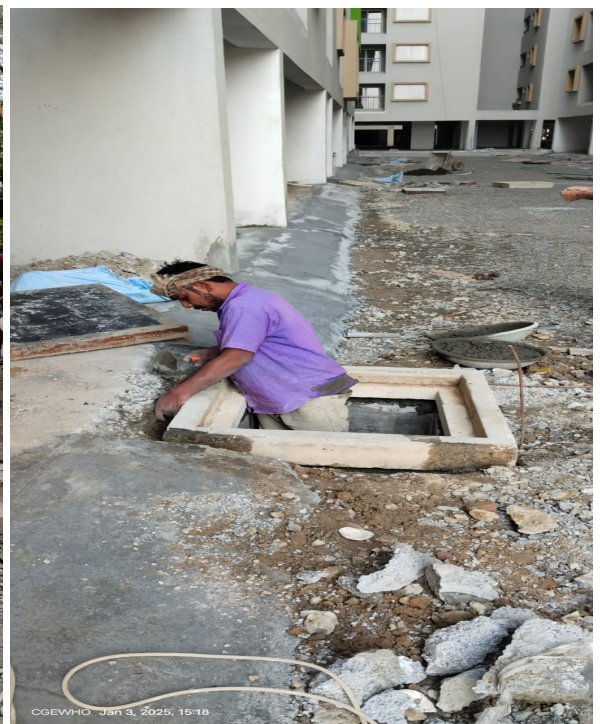
PROGRESS REPORT

CGEWHO – CHENNAI PHASE-III PROJECT

Block D2: Fixing of fuses in E.B Panel on progress



Block D3: Laying of PCC around the block on progress.



PROGRESS REPORT **CGEWHO – CHENNAI PHASE-III PROJECT**

Sewage Treatment Plant 1 (Near C Block). Installation process of STP started.



Sewage Treatment Plant 2 (Near D1 Block). Installation process of STP completed.



PROGRESS REPORT

CGEWHO – CHENNAI PHASE-III PROJECT

Under Ground Sump 1 (Opp to B1 Block). Installation of Pumps completed. Installation process of WTP started.



Under Ground Sump 2 (Near D1 Block). Installation of Pumps & installation of WTP completed.



PROGRESS REPORT

CGEWHO – CHENNAI PHASE-III PROJECT

External Electrification Works: Erection of Transformers & fixing of Pillar box completed for blocks A1, B1, B2, C2, C3, D1, D2 & D3 completed.



PROGRESS REPORT CGEWHO – CHENNAI PHASE-III PROJECT



Road Works : Laying of Granular Sub base in A1 North side completed.



PROGRESS REPORT

CGEWHO – CHENNAI PHASE-III PROJECT

Road Works - Laying of Wet Mix Macadam in A2 South side & Laying of Granular sub base in C1 East side completed.



Road Works : Levelling & formation of Sub-grade in backside of B1 & B2 on progress



PROGRESS REPORT
CGEWHO – CHENNAI PHASE-III PROJECT

QUALITY CONTROL

DURING CONSTRUCTION FOLLOWING QUALITY CONTROL TESTS CONDUCTED AT SITE:

| Sl.No. | Materials | Source from | Test Done | Result |
|--------|---|--|---------------|----------------------------------|
| 1 | M-Sand | Arcot (T.K), Ranipet (Dist) Walajabad(T.K), Kanchipuram (Dt) | Each Truck | Sieve Analysis & Silt content |
| 2. | P- Sand | Uthiramerur, Kanchipuram (DT) Walajabad(T.K), Kanchipuram (Dt) | Each Truck | Sieve Analysis & Silt content |
| 2 | Coarse Aggregate (20mm) | Sriperambathur, Kanchipuram (Dt), Vellore Dt & Chittoor Dt. | Each Truck | Sieve Analysis |
| 3 | Coarse Aggregate (12mm) | Sriperambathur, Kanchipuram (Dt) Vellore Dt & Chittoor Dt. | Each Truck | Sieve Analysis |
| 4 | Cement | Third party testing is being done. | | |
| 5 | Steel | Third party testing is being done. | | |
| 6 | Pile Integrity | Third party testing is being done. | | |
| 7 | Soil Compaction | Third party testing is being done. | | |
| 8 | RCC cubes are being tested and Register is being maintained. | | | |
| 9 | Slump test conducted at site to insure workability of concrete. | | | |