

**CONSTRUCTION QUALITY AUDIT OF
UNDER CONSTRUCTION CGEWHO HOUSING
PROJECT (PH-III)
KOLKATA, WEST BENGAL**

By

Umesh Kumar Sharma, Professor



**Department of Civil Engineering
Indian Institute of Technology Roorkee
Roorkee, 247667
(April 2025)**

Contents

1.0	INTRODUCTION	1
1.1	Overview	1
1.2	Scope of Work	1
1.3	Structure Details	2
2.0	IN-SITU INVESTIGATIONS AND OBSERVATIONS	3
2.1	Overview	3
2.2	Detailed Visual Inspection and Observation	3
2.3	Non-destructive Testing	4
2.3.1	Ultrasonic Pulse Velocity Test	5
2.3.2	Surface Hardness Test using Rebound Hammer	6
2.3.4	Chloride Content & pH Tests	7
2.3.5	Documentation review	8
3.0	COMPLIANCE TESTING AND RESULTS	8
4.0	CONCLUSIONS AND RECOMMENDATIONS	9
	References	11
	Appendix I	12

List of Tables

<i>Table 1: Classification of the quality of concrete based pulse velocity as per amendment no. 1 in IS 516 part-5 section-1</i>	<i>6</i>
<i>Table 2: Rebound Number Criterion for Concrete Quality and condition</i>	<i>6</i>
<i>Table 3: Chloride and pH test results</i>	<i>8</i>

List of Figures

<i>Figure 1: Construction status of CGCWHO Housing Project Blocks.....</i>	<i>2</i>
<i>Figure 2: Anomalies in surface finishing</i>	<i>3</i>
<i>Figure 3: Honeycombing issues at isolated locations in Block 3.....</i>	<i>4</i>
<i>Figure 4: Typical view of Ultrasonic Pulse Velocity Test in Progress</i>	<i>5</i>
<i>Figure 5: Typical view of Rebound Hammer Test in Progress</i>	<i>7</i>

1.0 INTRODUCTION

1.1 Overview

The Department of Civil Engineering at the Indian Institute of Technology (IIT) Roorkee was requested by the Director (T) of CGEWHO to conduct a periodic construction quality audit for the under-construction CGEWHO Housing Project in Kolkata. Professor Umesh Kumar Sharma from the Department of Civil Engineering, IIT Roorkee, accepted this assignment and submitted a proposal to undertake the work in accordance with the consultancy rules and guidelines of IIT Roorkee. Upon acceptance of the proposal by the Director of CGEWHO, the project was officially awarded to IIT Roorkee.

The first stage construction audit of the building was carried out on March 22 and 23, 2025, by a team from IIT Roorkee. During the audit, the CGEWHO staff accompanied the IIT Roorkee team throughout the investigation. This report presents the details of the audit, including observations recorded during site inspections and testing, along with the corresponding inferences drawn.

1.2 Scope of Work

The scope of the audit work assigned to IIT Roorkee involved:

- Periodic visit to the site, twice in a year (as per site requirement) to guide and implement quality control/assurance measures, to ensure soundness of the structures, finishing works and provisioning, efficiency, and functionality of all services.
- Co-relation between civil structural, plumbing, electrical, and all other service drawings so that no mis-matching occurs during the execution of the project.

As per the defined scope, the team from IIT Roorkee visited the site and conducted a thorough assessment of the current construction status. The assessment included:

- a) A visual inspection to identify any construction defects, distress, or anomalies.
- b) Non-destructive testing (NDT) to evaluate the in-situ quality, structural integrity, and durability of the constructed members.
- c) Verification of built components to ensure compliance with structural drawings.

The findings and recommendations presented in this report are based on the extent of construction completed at the time of assessment. Any deviations that may arise in later stages of construction fall outside the scope of this report. It is also important to note that IIT Roorkee's engagement in this project was strictly for technical advisory purposes as outlined above, and this report is not intended for any legal use.

1.3 Structure Details

The CGEWHO Housing Project consists of three blocks: Block 1, Block 2, and Block 3.

- Block 1 is divided into two zones—Pile Zone and Non-Pile Zone—based on the type of foundation provided.
- Block 2 serves as the parking block.
- Block 3 is further subdivided into three parts based on construction progress and expansion joints provided.

The referenced structure utilizes the MIVAN construction technique, where reinforced concrete (RC) elements are cast monolithically, reducing the number of joints and improving structural integrity. The detailed construction status of each block is illustrated in **Figure 1**.

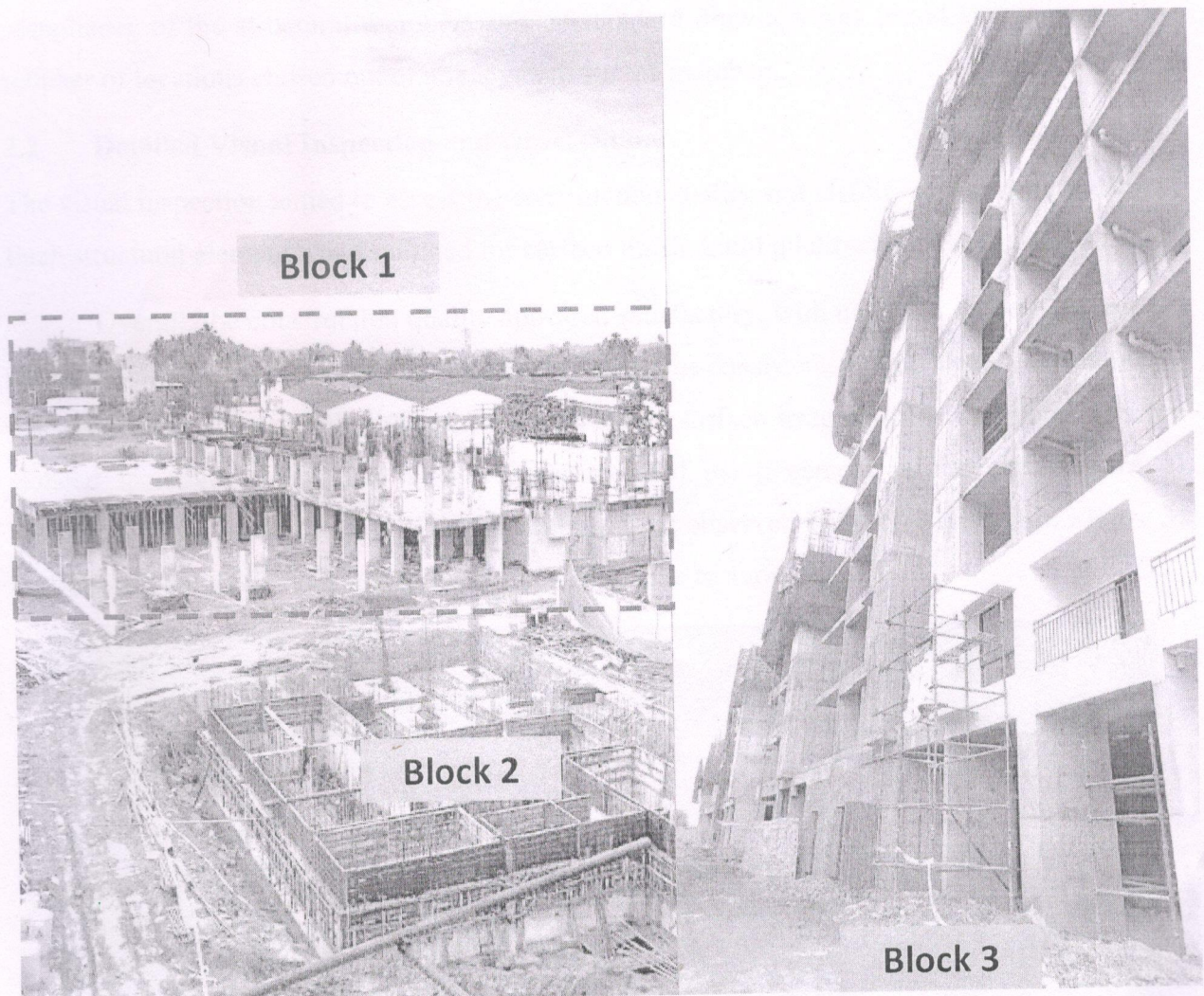


Figure 1: Construction status of CGCWHO Housing Project Blocks

As of the assessment date, construction progress varied across the blocks. In Block 1, the ground floor of the Pile Zone had been completed, whereas the columns for the Non-Pile Zone were

constructed in February. In Block 2, the foundation work was already completed, and the plinth beam construction was in progress. In Block 3, progress was recorded at different levels—Part 1 had reached the sixth floor, Part 2 had been cast up to the fourth floor, and Part 3 had progressed up to the second floor.

2.0 IN-SITU INVESTIGATIONS AND OBSERVATIONS

2.1 Overview

A detailed in-situ testing of the structural components of the buildings was conducted that included visual inspection, distress mapping, in-situ NDT, and extraction of samples to test the chemical makeup of concrete in the laboratories of IIT Roorkee. The nature and number of in-situ tests were planned on site based on the visual inspection and the extent of construction. It shall be noted that NDT investigations were performed on members that were at least 28 days old. However, compliance of the structural members against standard drawings was tested at a representative number of locations chosen out of already constructed members.

2.2 Detailed Visual Inspection and Observation

The visual inspection aimed to assess the construction quality and identify any structural distress. Each structural element was examined for surface finish, build quality, and signs of any defects.

Overall, the construction quality appeared satisfactory, with no major defects observed in the completed structural elements. The surface finish was consistent, and no significant anomalies were identified across the buildings. However, minor surface irregularities were noted at a few isolated locations, which had already been rectified using cement mortar (see **Figure 2**). Additionally, isolated instances of honeycombing were observed in Block 3 (shown in **Figure 3**). Necessary instructions and advice were given at the site to avoid them.

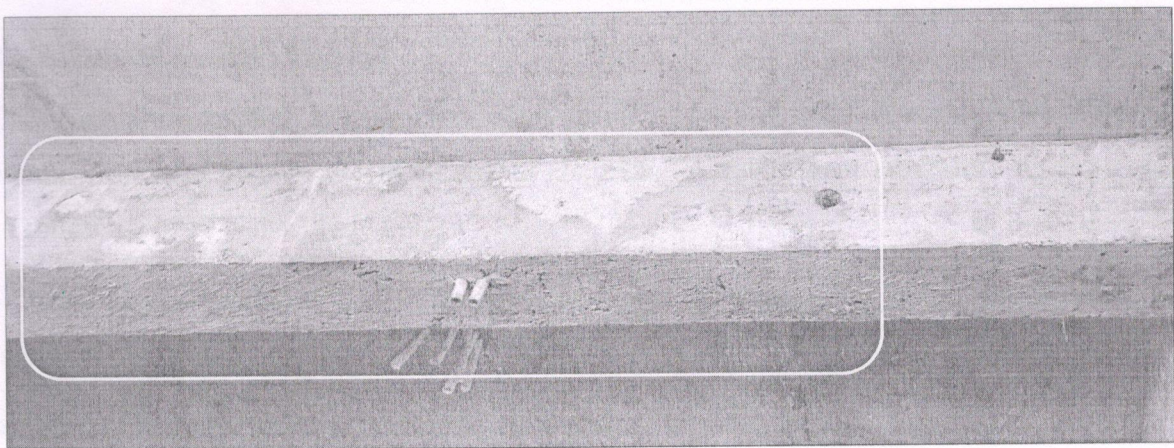


Figure 2: Few Instances of Anomalies in surface finishing

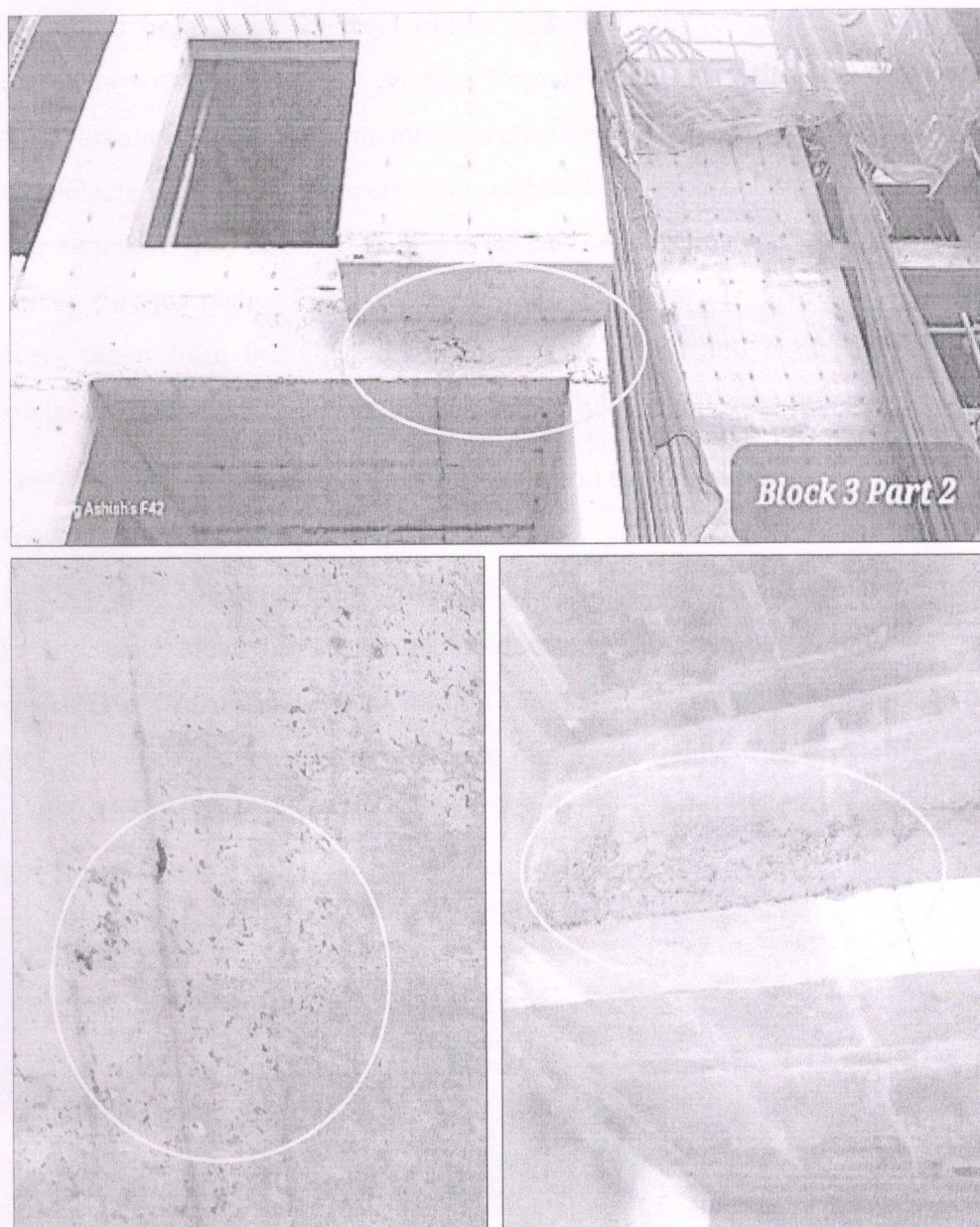


Figure 3: Honeycombing issues at isolated locations in Block 3

2.3 Non-destructive Testing

NDT's were performed on the structural components of the buildings. Some samples of hardened concrete were also acquired from structural elements for subsequent laboratory testing at IITR. The following NDT were carried out:

- (i) Ultrasonic pulse velocity (UPV) test was conducted to ascertain the homogeneity quality, and integrity of concrete,
- (ii) Rebound hammer test on concrete to ascertain the surface quality,
- (iii) Sampling and testing of concrete samples to determine the chemical makeup of the concrete (Chloride content and pH).

It should be noted that the non-destructive tests only give reliable results when concrete is

adequately matured or at least 28 days old in practical situations. Those newly constructed structural members with age less than 28 days were avoided for testing due to their inadequate maturity. A representative number of members were chosen from the mature members to perform NDT. All the selected test locations were duly prepared by smoothening the concrete surface, if and wherever required. The exposed concrete surface was cleaned of all loose material, dust, debris, or other foreign matter. The results of the NDT tests are given in **Appendix I**. Grid markings were taken from the GFC drawings in this regard and made available during the investigation by the CGEWHO housing project authority.

Following are the details of the non-destructive tests and their findings:

2.3.1 Ultrasonic Pulse Velocity Test

The UPV test is widely used to assess the homogeneity of concrete, detect internal defects such as cracks and voids, and evaluate the overall quality of concrete in reference to standard requirements. The method involves measuring the transmission velocity of ultrasonic pulses through the concrete mass. Higher velocities indicate better concrete quality in terms of density, homogeneity, and uniformity, while lower velocities may suggest inferior or delaminated concrete. A typical UPV test in progress is shown in **Figure 1**, and the interpretation criteria based on IS 516 Part 5 Section-1 are summarized in **Table 1**.



Figure 4: Typical view of Ultrasonic Pulse Velocity Test in Progress

Table 1: Classification of the quality of concrete-based pulse velocity as per amendment no. 1 in IS 516 part-5 section-1

S. No.	Pulse velocity, km/s	Concrete Quality Grading
For concrete ($\leq M25$)		
1	Below 3.50	Doubtful
2	3.50-4.50	Good
3	Above 4.50	Excellent
For concrete ($> M25$)		
4	Below 3.75	Doubtful
5	3.75-4.50	Good
6	Above 4.50	Excellent

According to project documentation, M30-grade concrete has been used in the ongoing construction. The test results indicate that the concrete quality at all tested locations falls within the "good" to "excellent" range, with UPV values varying between 3.78 km/s and 4.58 km/s, and an average value of 4.14 km/s. Although minor overestimation of UPV readings may occur due to residual moisture in the concrete, the overall values confirm the sound quality of the concrete. These findings align with the visual inspection, where the concrete elements were observed to be mostly free from any noticeable distress or defects.

2.3.2 Surface Hardness Test using Rebound Hammer

The rebound hammer test was carried out using an N-type (Schmidt make) rebound hammer of impact energy 2.25 N-m to ascertain the relative quality and strength of in-situ concrete. **Figure 2** shows a typical surface hardness test in progress at the site. The rebound hammer used was calibrated as per the recommendations of *IS 516: Part 5: Sec 4: (2020)*. During the rebound hammer tests, a minimum of ten number of readings were taken at every test location. Care was taken to avoid visible locations of coarse aggregate in the concrete surface for the hammer impact. The criterion given in **Table 2** is generally used for estimating the quality of concrete in new structures and for identifying the delaminated or damaged areas in old concrete structures.

Table 2: Rebound Number Criterion for Concrete Quality and condition

S. No.	Average Rebound	Quality and condition of concrete near surface
1	>40	Very Good
2	30-40	Good
3	20-30	Fair
4	<20	Poor and delaminated



Figure 5: Typical view of Rebound Hammer Test in Progress

Since construction was very new, negligible carbonation is expected. This makes rebound hammer test a reliable indicator of concrete surface quality. In the present case, the rebound hammer values vary between 38 to 52, indicating good to very good concrete surface quality. Such a high value also exhibits that concrete was free from patches or delamination.

2.3.4 Chloride Content & pH Tests

For reinforced concrete structures, *IS: 456-2000*, specifies an upper limit of 0.6 kg/m^3 for chloride content to ensure durability. Additionally, concrete is inherently alkaline, with sound concrete typically exhibiting a pH between 12 and 14, which helps maintain the passivation layer around reinforcement and prevents corrosion.

A total of fourteen concrete powder samples were collected from selected locations across the buildings to assess chloride content and pH levels. These samples were carefully sealed in polythene pouches and transported to the Department of Civil Engineering laboratories at IIT Roorkee for chemical analysis. Chloride content was determined following the guidelines of *IS 14959 (Part 2)-2001*.

The test results indicate that chloride levels in the concrete were negligible at the time of testing, with an average value below the permissible limit of 0.6 kg/m^3 , confirming that the concrete does not pose an immediate durability risk due to chloride-induced corrosion. Additionally, the pH of the concrete samples averaged 12.31, indicating adequate alkalinity, which is essential for maintaining reinforcement passivation and long-term durability.

Table 3: Chloride and pH test results

Sr. No	Test Location	Member ID	Member type	Block-Part	Floor	Chloride	pH
1	G-K-9-10	-	Slab	3-P1	4	0.52	12.39
2	A-24-25	TBX-12S	Beam	3-P2	2	0.17	12.28
3	R-30	3SW-86	Shear wall	3-P1	GF	0.17	12.1
4	B-D-18	TBY-144	Beam	3-P2	GF	0.35	12.15
5	N-2	3SW-12	Shear wall	3-P3	GF	0.52	11.9
6	J-H-15	1BX-17	Beam	1-Pile zone	GF	0.35	12.32
7	J-K-12-14	-	Slab	1-Pile zone	GF	0.17	12.24
8	L-2	C-20	Column	1-Pile zone	GF	0.53	11.95
9	-	3SW5	Shear wall	3-P1	2	0.35	12.53
10	B-2-3	TBX-36	Beam	3-P1	4	0.35	12.38
11	G-K-14	TBY-135	Beam	3-P2	2	0.35	12.52
12	D-E-9	TBY-72	Beam	3-P1	6	0.52	12.44
13	M-L-3	3SW-13	Shear wall	3-P1	6	0.18	12.66
14	C-D-21-22	-	Slab	3-P2	2	0.17	12.54

2.3.5 Documentation review

A comprehensive review of the material test reports, including concrete and steel, was conducted to assess compliance with quality standards. The test reports were carefully examined, and the results were satisfactory overall. Some anomalies were seen in recording cube strength results and application of acceptance criterion. Necessary advice was given to the site engineers to adopt correct procedure in this regard.

3.0 COMPLIANCE TESTING AND RESULTS

The RC structural members were checked for compliance with the drawings provided to the IIT Roorkee team. Dimensions and alignment of a representative sample of members were recorded. Additionally, details regarding the number and spacing of reinforcement bars and the clear cover to transverse bars were checked using rebar locator.

The details of compliance testing are furnished in **Appendix I**, and their summary is as follows:

- The concrete members' dimensions largely complied with the details provided in the drawings. A variation in few millimeters could be expected but are largely within tolerance limits.
- The RCC members section details such as member sizes, spacing between main reinforcement, spacing between stirrups at mid-height and at supports, and number of longitudinal bars were recorded.
- The spacing of longitudinal reinforcement was found to comply with the details shown in drawings largely, and a variation of about 10 mm could be deemed acceptable. Similarly, the

spacing of stirrups at the members' bottom and mid-height were also noted to be as per the drawings and a variation of 10 to 20 mm was noted. The number of longitudinal bars determined on-site for both the faces of the columns matched exactly with the details given in drawings.

- A record of the concrete cover measurements shows that the clear cover to the reinforcement was largely satisfactory barring a few isolated locations of low cover. Overall, the quality of construction with respect to the provision of correct cover thickness is deemed to be satisfactory.

4.0 CONCLUSIONS AND RECOMMENDATIONS

A construction audit of the under construction CGEWHO Housing Project at Kolkata was undertaken during 22-23rd March, 2025. The main aims were to examine the construction quality, adequacy, and compliance of various structural elements of the building with respect to the GFC drawings. The following conclusions are drawn and recommendations made based on the investigations:

- i. The overall quality of construction has been found to be satisfactory. The constructed members were generally visibly sound, and no major symptoms of inadequate quality were seen. Necessary instructions were given to the site staff wherever any improvements were felt possible.
- ii. The NDT results conform to the visual assessment, where UPV and rebound hammer test results have shown good to excellent concrete quality. The chemical test results, such as chloride and pH have shown compliance with the specified requirements of durability.
- iii. The compliance test results have shown that the members constructed to date comply with the design requirements. Member sizes, rebar spacing, and number of rebars were largely same as mentioned in the drawings. While provision of cover thickness was mostly fine, there were few locations showing a cover slightly smaller than the required. Since the member sizes complied with the drawings, it was noted that the adjacent faces in the columns exhibited different covers at such few locations. This needs to be addressed in future.
- iv. The overall construction documentation was found to be satisfactory and in line with standard guidelines, minor inconsistencies in the recording of cube compressive strength results were identified. Timely recommendations were provided to the project authorities to ensure corrective measures in this regard.

- v. Since this is a concrete intensive construction, it is advised that extra care should be taken in the construction of all the exposed RC walls and other members. All the planned shuttering holes and joints in the external walls should be properly grouted.
- vi. As a measure of extra precaution and protection against any future durability issues, it is recommended to apply suitable concrete surface protective coating on all the exposed RC members. Anti-carbonation Aliphatic acrylic or PU coating is one such good option.

UMESH
KUMAR
SHARMA

(Umesh Kumar Sharma)

Professor, CED

Digitally signed by UMESH KUMAR SHARMA
DN: c=IN, o=INDIAN INSTITUTE OF
TECHNOLOGY ROORKEE, ou=INDIAN INSTITUTE
OF TECHNOLOGY ROORKEE,
2.5.4.20=5a68192ee2cb784324746a3a01a70
7772448bc1244c07a1a1a219c8b1,
postalCode=241667, st=Uttaranchal,
serialNumber=3a8f5a278a37ecc05d7e0d89
2f0a3a321d5a4a9c399302cc49952a0b,
cn=UMESH KUMAR SHARMA
Date: 2023.04.24 18:09:35 +05'30'

References

1. IS 516 Part-5 Section-1, "Hardened Concrete-Methods of Test: Non-destructive Testing of concrete-ultrasonic pulse velocity testing," *Bur. Indian Stand. New Delhi*, 2018.
2. IS 516 Part-5 Section-4, "Hardened Concrete-Methods of Test: Non-destructive Testing of concrete-rebound hammer test," *Bur. Indian Stand. New Delhi*, 2020.
3. IS 456 : 2000, "Plain and Reinforced Concrete: Code of Practice," *Bur. Indian Stand. New Delhi*, vol. 31, no. July 2000.
4. IS 14959: Part I (2001), "Determination of Water-Soluble and Acid Soluble Chlorides in Mortar Concrete — Method of Test," vol. 14959, no. August 2001, 2021.
5. "Handbook on Repair and Rehabilitation of RCC Buildings" by CPWD (2002).
6. Bungey, S, Lillard, G. and Grantham M.G., —Testing of Concrete in Structures, 4th Edition, Taylor and Francis, London
7. Structural Drawings and Beam-Column layout plan of different building in CEGWHO Housing project, Kolkata.